

# 13 HERTONIA ST, BRAMPTON



APRX 4000 SQ FT!! ! WELCOME TO 13 HERTONIA ST, COME & CHECK OUT THIS 5 BEDROOMS & 5 WASHROOMS (4 FULL WASHROOMS ON SECOND FLOOR) FULLY DETACHED LUXURIOUS HOUSE BUILT ON 55 FT WIDE LOT. MAIN FLOOR OFFERS SEPARATE FAMILY ROOM, SEPARATE LIVING & DINING ROOM. HARDWOOD FLOOR THROUGHOUT & POT LIGHTS IN THE KITCHEN & FAMILY ROOM. FULLY UPGRADED KITCHEN WITH GRANITE COUNTER TOPS, S/S APPLIANCES AND CENTRAL ISLAND. MAIN FLOOR OFFERS SPACIOUS DEN. SECOND FLOOR FEATURES 5 GOOD SIZE BEDROOMS & 4 FULL WASHROOMS. MASTER BEDROOM WITH 5PC ENSUITE & WALK-IN CLOSET. SEPARATE ENTRANCE TO UNFINISHED BASEMENT. FULLY UPGRADED MAPLE HARDWOOD, MAPLE KITCHEN & UPGRADED PORCELAIN TILES. NO SIDE WALK, STONE & STUCCO ELEVATION.

EXTRAS: ALL EXISTING APPLIANCES: FRIDGE, STOVE, DISHWASHER, WASHER & DRYER, ALL EXISTING WINDOW COVERINGS, CHANDELIERS & ALL EXISTING LIGHT FIXTURES NOW ATTACHED TO THE PROPERTY.



# *13 Hertonia St, Brampton*

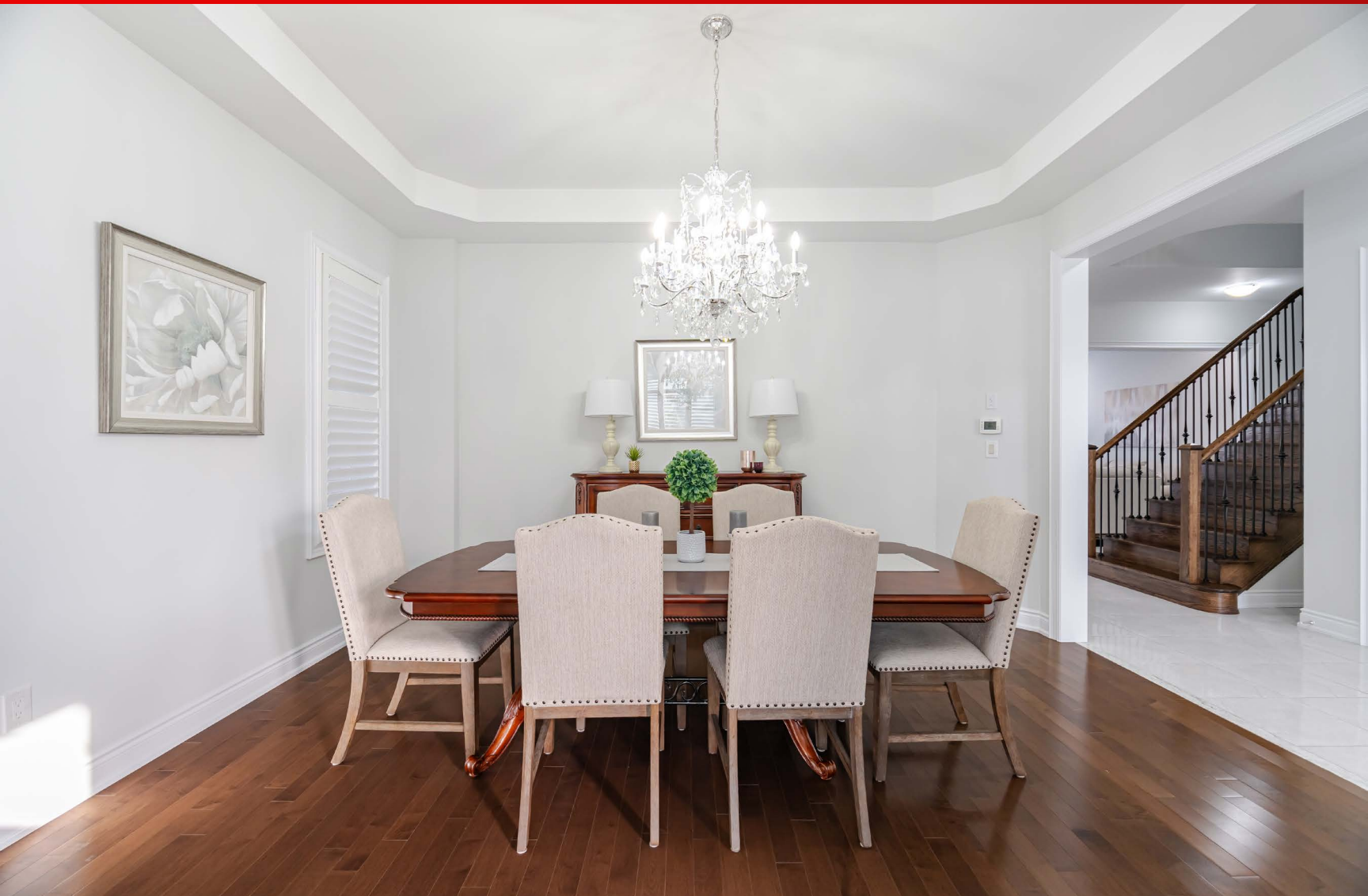


## ENTRANCE



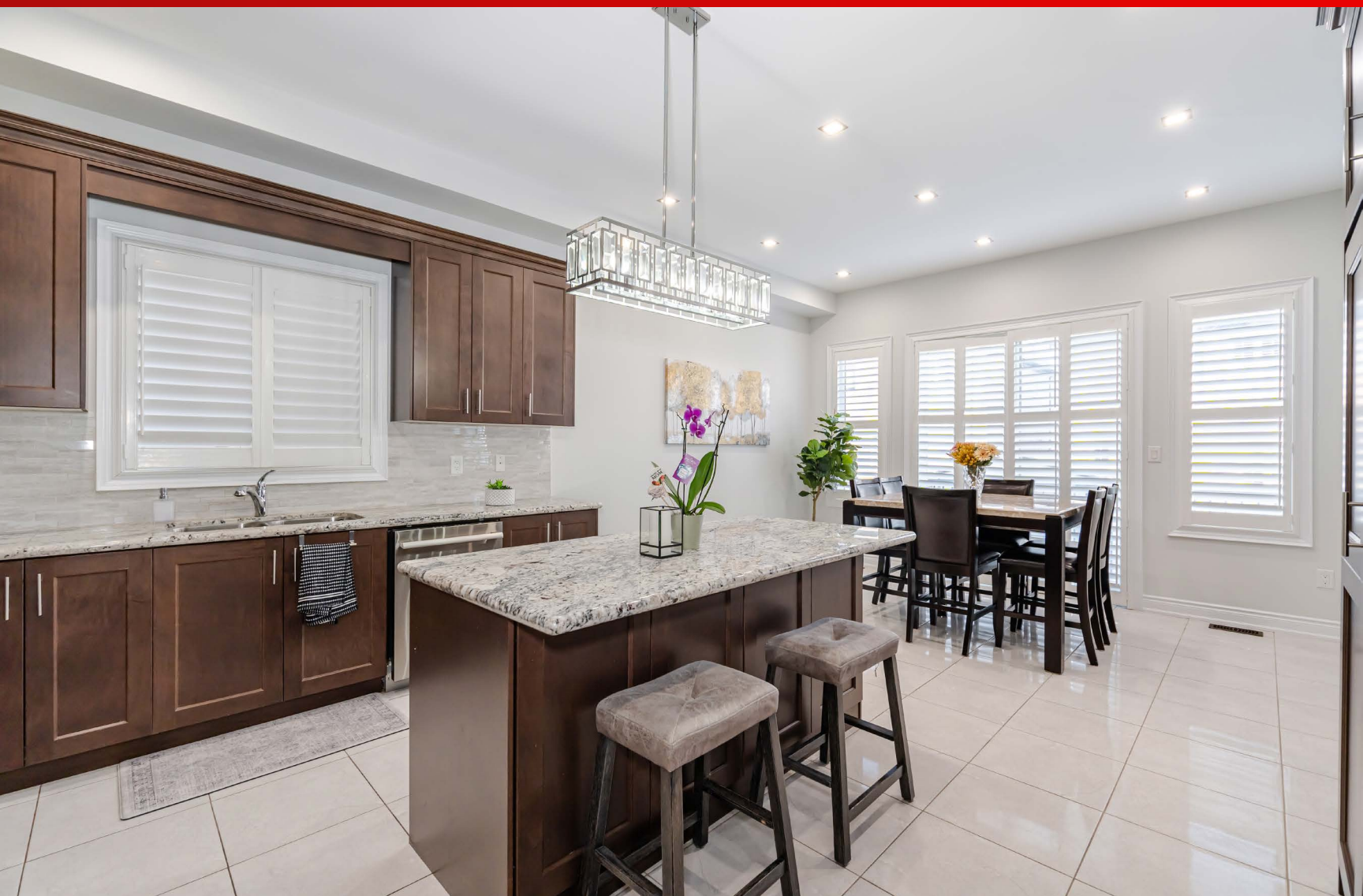


# LIVING & DINING ROOM





# KITCHEN





# FAMILY ROOM

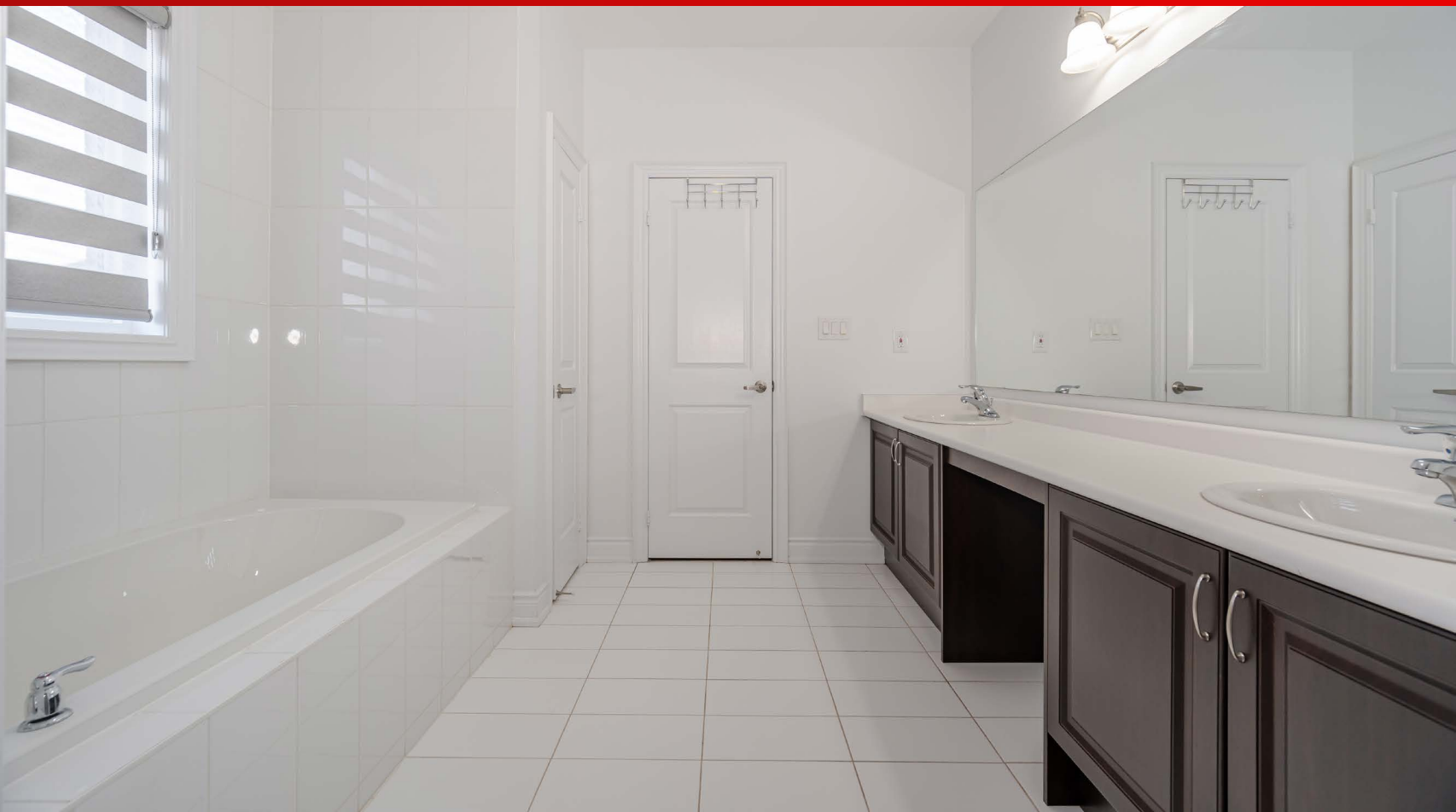


# OFFICE



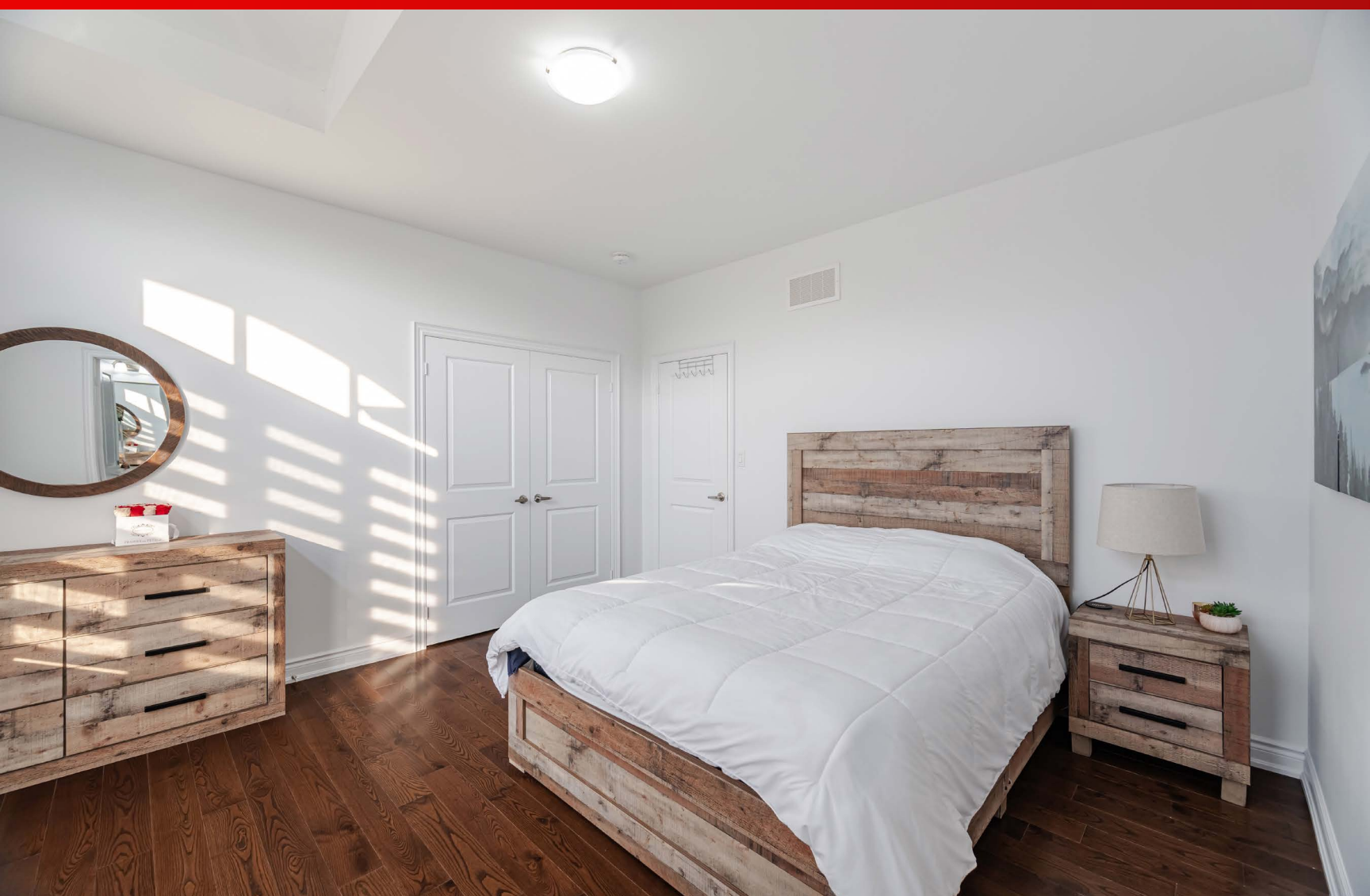


# PRIMARY BEDROOM





# BEDROOMS



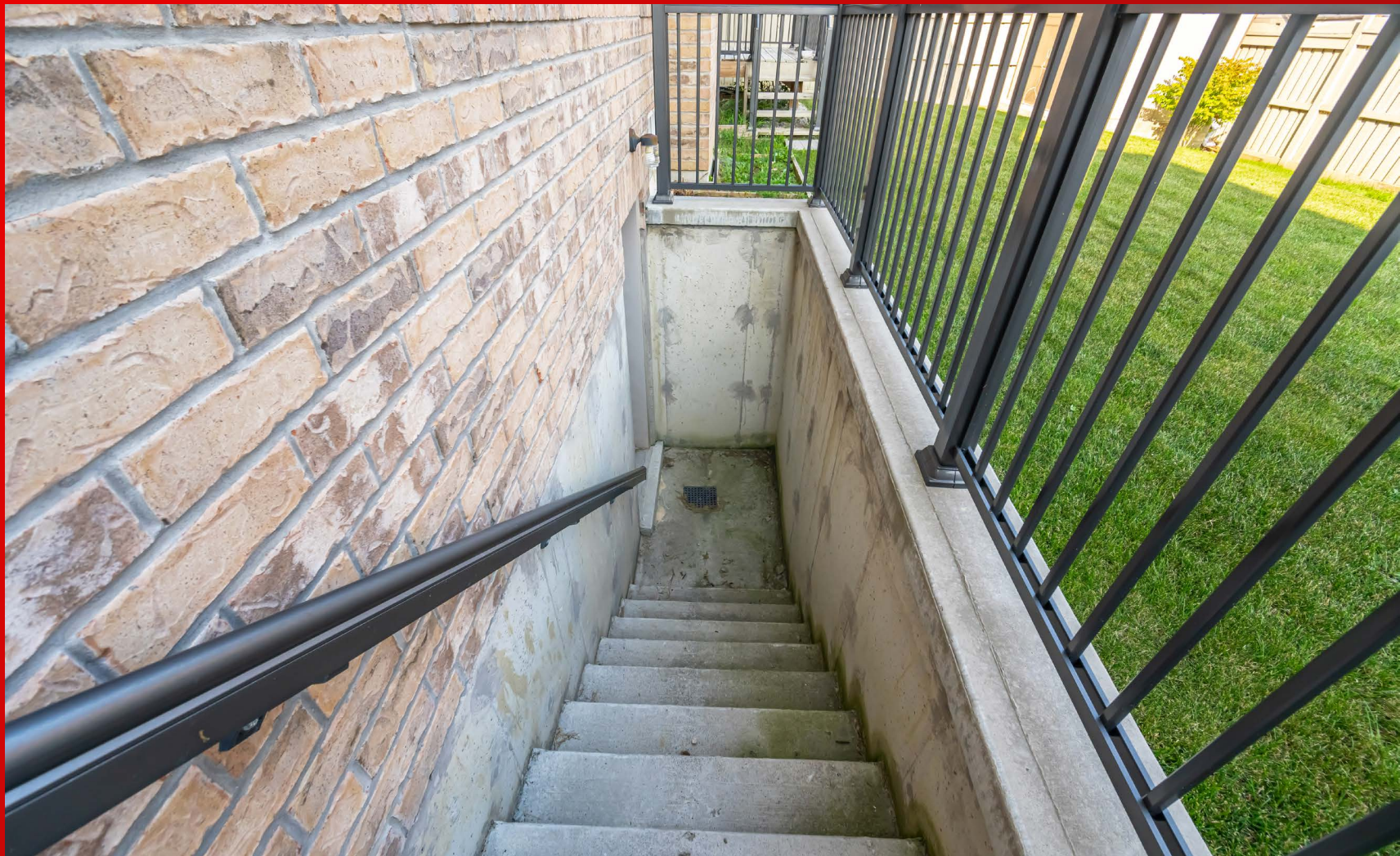


# BEDROOMS





# BACKYARD





# BACKYARD











**13 Hertonia St**  
**Brampton Ontario L6P 4E6**  
 Brampton Toronto Gore Rural Estate Peel  
**SPIS:** N      **Taxes:** \$12,086.81/2024

**For: Sale**

Detached      **Front On:** S  
**Link:** N      **Acre:**  
 2-Storey

**Rms:** 11  
**Bedrooms:** 5  
**Washrooms:** 5  
 1x2xMain, 1x5x2nd, 1x4x2nd,  
 2x3x2nd

**Lot:** 55.13 x 98.42 Feet **Irreg:**  
**Dir/Cross St:** Countryside/Mcvean

**MLS#:** W9235448      **PIN#:** 142151395  
**Possession Remarks:** Flex

<b>Kitchens:</b> 1 <b>Fam Rm:</b> Y <b>Basement:</b> Sep Entrance / Unfinished <b>Fireplace/Stv:</b> Y <b>Heat:</b> Forced Air / Gas <b>A/C:</b> Central Air <b>Central Vac:</b> <b>Apx Age:</b> <b>Apx Sqft:</b> 3500-5000 <b>Assessment:</b> <b>POTL:</b> <b>POTL Mo Fee:</b> <b>Elevator/Lift:</b> <b>Laundry Lev:</b> Upper <b>Phys Hdcap-Eqp:</b>	<b>Exterior:</b> Stone / Stucco/Plaster <b>Drive:</b> Pvt Double <b>Gar/Gar Spcs:</b> Built-In / 2 <b>Drive Park Spcs:</b> 4 <b>Tot Prk Spcs:</b> 6 <b>UFFI:</b> <b>Pool:</b> None <b>Energy Cert:</b> N <b>Cert Level:</b> <b>GreenPIS:</b> N <b>Prop Feat:</b> Family Room, Fenced Yard, Fireplace/Stove, Library, Park, Public Transit, Rec Centre, School	<b>Zoning:</b> Residential <b>Cable TV:</b> <b>Hydro:</b> <b>Gas:</b> <b>Phone:</b> <b>Water:</b> Municipal <b>Water Supply:</b> <b>Sewer:</b> Sewers <b>Spec Desig:</b> Unknown <b>Farm/Agr:</b> <b>Waterfront:</b> <b>Retirement:</b> <b>Oth Struct:</b>
--	---	--

#	Room	Level	Length (ft)	Width (ft)	Description		
1	Living	Main	0	0	Hardwood Floor	Separate Rm	Window
2	Dining	Main	0	0	Hardwood Floor	Separate Rm	Window
3	Family	Main	0	0	Hardwood Floor	Fireplace	Pot Lights
4	Den	Main	0	0	Hardwood Floor	Separate Rm	Window
5	Kitchen	Main	0	0	Ceramic Floor	Granite Counter	Stainless Steel Appl
6	Breakfast	Main	0	0	Ceramic Floor	Combined W/Kitchen	Window
7	Prim Bdrm	2nd	0	0	Hardwood Floor	W/I Closet	5 Pc Ensuite
8	2nd Br	2nd	0	0	Hardwood Floor	Closet	Window
9	3rd Br	2nd	0	0	Hardwood Floor	Closet	Window
10	4th Br	2nd	0	0	Hardwood Floor	Closet	Window
11	5th Br	2nd	0	0	Hardwood Floor	Closet	Window

**Client Remks:** Aprx 4000 Sq Ft!! Welcome To 13 Hertonia St, Come & Check Out This 5 Bedrooms & 5 Washrooms (4 Full Washrooms On Second Floor) Fully Detached Luxurious House Built On 55 Ft Wide Lot. Main Floor Offers Separate Family Room, Separate Living & Dining Room. Hardwood Floor Throughout & Pot Lights In The Kitchen & Family Room. Fully Upgraded Kitchen With Granite Counter Tops, S/S Appliances And Central Island. Main Floor Offers Spacious Den. Second Floor Features 5 Good Size Bedrooms & 4 Full Washrooms. Master Bedroom with 5Pc Ensuite & Walk-in Closet. Separate Entrance To Unfinished Basement. Fully Upgraded Maple Hardwood, Maple Kitchen & Upgraded Porcelain Tiles. No Side Walk, Stone & Stucco Elevation.

**Extras:** All Existing Appliances: Fridge, Stove, Dishwasher, Washer & Dryer, All Existing Window Coverings, Chandeliers & All Existing Light Fixtures Now Attached To The Property.





# Education

🇫🇷 French Immersion | 
 ❤️ Before & After Care | 
 🎓 Percent of Students Identified as Gifted | 
 🌱 Percent of Students with Special Needs  
📄 Percent of Parents with Diploma | 
 ★ Fraser Institute Score | 
 👥 Average Student Enrolment

## Elementary Schools

0.0km  
0min

**Our Lady of Lourdes Catholic Elementary**

25 Mount Royal Circle, Brampton, Ontario,

**Dufferin-Peel CDSB**

Grade: JK-8

**This School Features:**

100% 0% 7.6

205

0.0km  
0min

**Castle Oaks Public School**

155 Castle Oaks Cross, Brampton, Ontario,

**Peel DSB**

Grade: JK-8

**This School Features:**

93% 8% 6.0

885

1.8km  
4min

**St Patrick School**

11948 The Gore Rd RR 9, Brampton, Ontario,

**Dufferin-Peel CDSB**

Grade: JK-8

**This School Features:**

90% 20% 7.1

270

3.7km  
7min

**Mount Royal Public School**

65 Mount Royal Crl, Brampton, Ontario,

**Peel DSB**

Grade: JK-8

**This School Features:**

96% 7% 7.7

955

5.0km  
8min

**Castlemore Public School**

9916 THE GORE RD, BRAMPTON, Ontario,

**Peel DSB**

Grade: JK-8

**This School Features:**

94% 10% 8.0

590

4.2km  
9min

**Holy Spirit Catholic Elementary School**

25 Bloomsbury Avenue, Brampton, Ontario,

**Dufferin-Peel CDSB**

Grade: JK-8

**This School Features:**

95% 20% 5.6

300

## Secondary Schools

5.6km  
9min

**Cardinal Ambrozic Catholic Secondary**

10 Castle Oaks Crossing, Brampton,

**Dufferin-Peel CDSB**

Grade: 9-12

**This School Features:**

90% 14% 7.4

1450

6.6km  
12min

**Castlebrooke Secondary School**

10 Gardenbrooke Trail, Brampton, Ontario,

**Peel DSB**

Grade: 9-12

**This School Features:**

86% 10% 6.4

1925

7.4km  
14min

**Sandalwood Heights Secondary**

2671 Sandalwood Pkwy E, Brampton, Ontario,

**Peel DSB**

Grade: 9-12

**This School Features:**

89% 20% 5.6

990

### Tutoring

📍 Xpert Tutoring & Private High School	3.1 km
📍 Prem Tutoring	4 km
📍 ICAN Education Castlemore Tutoring	4 km
📍 Steps to Success Tutoring and	4.6 km
📍 All Study Buddy - Tutoring Classes in	5.2 km

### Private

📍 KMSchool	1 km
📍 Countryside Montessori & Private	5.7 km
📍 Innocent Hearts Secondary School	5.9 km
📍 Kleinburg Christian Academy	6 km
📍 Northview Collegiate : Private High School	6.4 km

### Day Care

📍 Closer II Home Programs	0.8 km
📍 PLASP Child Care Services - St. Patrick	1.1 km
📍 Smarties Preschool	4 km
📍 Creative Children's Montessori School	5.2 km
📍 PLASP Child Care Services - Hewson	5.4 km

### Libraries

📍 Brampton Library - Gore Meadows	3.3 km
📍 Brampton Library, Springdale Branch	6.2 km
📍 Caledon Public Library - Albion-	7.4 km
📍 Kleinburg Library	9.1 km
📍 Caledon Public Library - Southfields	9.7 km





# Parks

0.5km  
2min

## Michael Murphy

📍 Squire Ellis Dr And Martin Bynre Dr

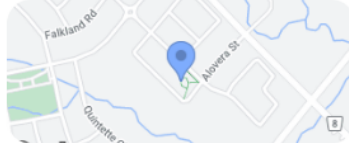


This facility includes a  
Playground, Soccer Field, Splash  
Pad

1.2km  
3min

## Daniel Boyle Park

📍 20 Herringbone Cres, Brampton



This facility includes a  
Playground

1.4km  
3min

## Father Eugene

📍 Leo Austin Road, Brampton



This facility includes a  
Playground

2.9km  
6min

## Cassin Park

📍 Grafton Cres, Brampton, ON, L6P, Canada



This facility includes a Trails

2.5km  
4min

## Martyniuk Park

📍 Michelangelo Blvd, Brampton, ON, L6P, Canada

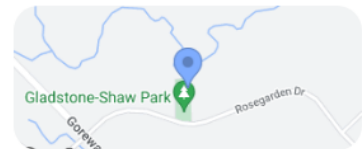


This facility includes a Sports  
Field

0.0km  
0min

## Gladstone-Shaw

📍 Rosegarden Dr, Brampton, ON, L6P, Canada



This facility includes a  
Playground

### Hike / Bike Trail

📍 Humber Valley Heritage trail	7.9 km
📍 Humber Valley Heritage trail	8.7 km
📍 Chinguacousy Trail	9 km
📍 Humber Valley Heritage trail	9.3 km
📍 Esker Lake Trail	9.5 km

### Beaches

📍 Professor's Lake	7 km
📍 Son of a beach	12.7 km
📍 Verobeach Parkette	17.1 km
📍 Diamond Beach Sports	20.8 km
📍 Son of a Beach Volleyball	24.6 km

### Ski Resorts

📍 Chinguacousy Park Ski Chalet	9.2 km
📍 Centennial Park Hill	20.6 km
📍 Trakkers Cross-Country Ski Club	26.8 km
📍 The ROC	58.4 km
📍 Lakeridge Ski Resort	58.6 km

### Conservation / Provincial

📍 Nashville Conservation Reserve	7.5 km
📍 Claireville conservation area	8.7 km
📍 Heart Lake Conservation Park	9.3 km
📍 Claireville Conservation Area	9.3 km
📍 Kortright conservation area-	10.8 km





# Nearby Amenities



## Groceries

### Health Food Stores

Village Health Foods	5.9 km
GNC	7.7 km
Natasha Wismer De Rose	9.8 km
Health Food Store Brampton	10 km
NATUROPATHIC SUPPLEMENTS	10.1 km

### Liquor Stores

LCBO	5.4 km
LCBO	6 km
The Beer Store	6.2 km
Beer Store 2022	6.4 km
LCBO	6.4 km

### Farms & Markets

Malhi Farm	2.8 km
Caledon Sabzi Farm-Garden Centre/	3.3 km
Kooner Farms	3.6 km
McVean Farm	6 km
Armstrong Manor Farm	7.9 km

### Convenience Stores

7-Eleven	4.8 km
Hasty Market	5.4 km
Georges Convenience	5.7 km
Hasty Market	5.8 km
Hasty Market	6.6 km

### Local Chains

Noble Fresh Foods	4.7 km
Fortinos	5.5 km
Fateh Grocery Depot	5.6 km
Raman's No Frills	5.7 km
Food Basics	7.1 km
Chalo FreshCo Airport &	3.5 km
Sobeys North Park	8.5 km
Metro	10.5 km
Longo's Rutherford	9.9 km
Loblaw pharmacy	6.7 km



## Shopping

### Sports & Outdoors

Sport Chek	5.9 km
MEC Warehouse Brampton	8.8 km
Sport Chek	9.1 km
Kids Foot Locker	10.5 km
Foot Locker	10.5 km

### Shopping Malls

Bramalea City Centre	10.5 km
The Albion Mall	13.9 km
Woodbine Mall & Fantasy Fair	14.4 km
Vaughan Mills	15.5 km
Shoppers World Brampton	16.1 km

### Big Box Stores

Costco Wholesale	8.6 km
Walmart Supercentre	5.7 km
Canadian Tire Gas+	12.1 km
Real Canadian Superstore	16.2 km

### Home Improvement

Brampton Garden Center	2.1 km
The Home Depot	5.8 km
Streetsville Home Hardware	24.6 km
Home & Garden RONA / Brampton	12.7 km
Lowe's Home Improvement	10.1 km

### Dollar Stores

Dollarama	5.4 km
Your Dollar	5.5 km
Your Dollar & Discount World	5.8 km
Dollarama	5.9 km
Dollarama	6 km





# Nearby Amenities



## Medical

### Hospitals

Medical Center	6.1 km
Wellstart	6.2 km
Brampton Emergency Hospital	7 km
William Osler Health System - Brampton	7 km
Brampton Civic Hospital Entrance A	7.1 km

### Walk-In Clinics

Brampton Urgent Care Centre	5.5 km
Pulse Urgent Care Centre	5.8 km
B&C Urgent Care & Walk-In Medical	6.1 km
Brampark Walk-In Clinic	6.6 km
Bovaird Urgent Care	6.6 km

### Pharmacies

Squire Ellis Pharmacy	0.8 km
Pharmasave Lacoste Pharmacy	3.2 km
Pharmasave Gardenbrooke	4 km
Castlemore Pharmacy PharmaChoice	4.7 km
Father Tobin Pharmacy	4.8 km

### Optometrists

Focus Optometry	5.3 km
Bolton Optometry Clinic	5.3 km
Image Optical   Brampton Eye Care	5.5 km
Family Optical	5.7 km
EYEOLGY Optometry &	5.8 km

### Dental Clinics

Braydon Dental Care	4.1 km
Bolton Park Dentistry // Dr. Mindy Gelfand	5.2 km
Valley Creek Dental	5.4 km
Bramcountry Dental	6.1 km
Cottrelle Dentistry - Dr. Bhandal &	6.4 km

### Chiro/Massage/Sport Th...

Magical Fingers Mobile (in home)	3.5 km
Mimosa Rehab	4 km
Castlemore Advanced	4.1 km
Lanos Wellness and Spa	4.6 km
Proactive Health & Performance -	5.2 km

### Labs/Testing

Dynacare Laboratory and Health Services	6.2 km
Lifelabs Medical Laboratory Services	6.4 km
Lifelabs Medical Laboratory Services	8 km
Lifelabs Medical Laboratory Services	9.2 km
Lifelabs Medical Laboratory Services	10.6 km



## Emergency

### Police & Fire Depart...

Brampton Fire Station 211	1.6 km
Brampton Fire Station 209	5 km
Vaughan Fire Station 7-4	6.7 km
Brampton Fire Station 213	6.9 km
Brampton Fire Station 203	7 km



## Government Services

### Government Offices

Service Canada Centre	12.6 km
Service canada	13.7 km
ServiceOntario	5.5 km
ServiceOntario	7.8 km

### Banking

BMO Bank of Montreal	5.3 km
Scotiabank	3.7 km
CIBC Branch with ATM	5.4 km
RBC Royal Bank	5.6 km
TD Canada Trust Branch and ATM	5.5 km

### Postal Services

Canada Post	5.6 km
FedEx Authorized ShipCentre	8 km
Purolator	12.7 km
The UPS Store	3.1 km
Amazon Fulfillment Centre YYZ7	4.4 km





# Nearby Amenities



## Health & Lifestyle

### Golf Courses

Yuvish Singh Golf Academy - Trackman	1.2 km
Mayfield Golf Club	5.2 km
Banty's Roost	6.4 km
Copper Creek Golf Club	9.3 km
Turnberry Golf Club	10.3 km

### Community Centres

Gore Meadows Community Centre &	3.3 km
NACC	6.6 km
Ebenezer Community Hall	6.8 km
Riverstone Community Centre	6.8 km
Albion Bolton Community Centre	7.4 km

### Fitness / Gyms

LA Fitness	5.6 km
F45 Training Bolton South	5.7 km
GoodLife Fitness Brampton Mayfield	5.7 km
9Round Bolton	5.8 km
Anytime Fitness	5.9 km

### Public Sports Facilities

Mayfield Arena	5.8 km
Mayfield Recreation Complex	5.8 km
North Hill Park - Diamond 1	8.8 km
Bolton Braves Baseball Association-	9 km
Sonoma Heights Diamond	9.2 km

### Personal Care & Groomi...

Brampton Laser Clinic	4.3 km
Calm Waters Day Spa and Laser Clinic	5.2 km
La Unique Laser Centre	5.7 km
Shine Hair Salon & Barber	5.9 km
The Paris Laser Clinic	6.1 km

### Places of Worship

Sikh Heritage Centre	3.2 km
Nanaksar Thath Isher Darbar	3.9 km
Ar-Rashaad Centre	6 km
Peel Pentecostal Tabernacle	6 km
Hindu Sabha	6.1 km



## For your fury friends

### Dog Parks

Goodfellow Parkette	9.6 km
White Spruce Park Off-leash Area	9.9 km
Bramalea Ltd Community Dog Park	10.3 km
Dog park	10.4 km
Duggan Park Off-Leash Area	13.1 km

### Grooming

Oliver's Dog Grooming	7 km
Diamond Cuts Dog Grooming	7.1 km
Urban Pet Boutique Grooming & Supplies	7.3 km
Chi Chi's Grooming Place	7.8 km
Vanity Fur Grooming Boutique	10.3 km

### VETS

North Hill Animal Hospital	5.7 km
Northpoint Veterinary Hospital	5.8 km
Bolton Veterinary Hospital	7.1 km
Bramalea Animal Hospital	7.9 km
Kleinburg Veterinary Hospital	8.6 km

### Pet Stores

Pet Valu	5.8 km
Pet Valu	6.1 km
Global Pet Foods	6.9 km
Global Pet Foods	8.1 km
Global Pet Foods Corporate Office	8.3 km





**Harbinder Brar**

BROKER

**Cell: 647-988-4546**



**Rick Brar**

SALES REPRESENTATIVE

**Cell: 647-504-0137**

**#1 REALTORS IN ENTIRE L6P\*\***

**www.L6P.me**



**RE/MAX<sup>®</sup> GOLD**  
REALTY INC. BROKERAGE

Independently Owned and Operated

905  
416 **456-1010**



Not intended to solicit buyers or sellers currently under contract.